

**HOME
IS OUR
STORY**

FOR SALE R2,450,000

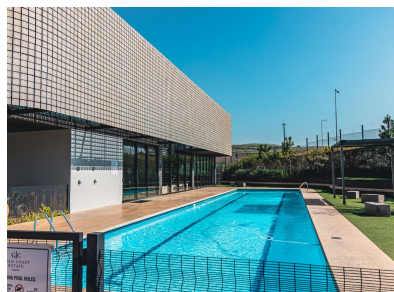
**29 2ND AVENUE, GOLD COAST ESTATE, SIBAYA
PRECINCT**

Seeff



[youtube.com/c/seeffzimbali/](https://www.youtube.com/c/seeffzimbali/)

www.seeff.com: RLS976776



PRIME VACANT LAND WITH OPPORTUNITY TO BUILD A FLAT-LEVEL HOME

Reside in one of South Africa's top five most affluent suburbs. This exceptional 581m² plot, located in the prestigious Gold Coast Estate, offers the perfect opportunity to build a flat-level home, designed to blend seamlessly with the estate's contemporary architectural vision. Positioned for privacy and convenience, this stand allows for a spacious, open-plan design that maximizes natural light and enhances indoor-outdoor living.



Dalene Govindasamy

082 333 6607

dalene.govindasamy@seeff.com

Scan here
to view
full listing



Land Size 581m²

Rates -

Estate Levy R5,674.70

