

**HOME
IS OUR
STORY**

FOR SALE R19,000,000

1570 GENAZANO AVENUE, WESTBROOK

Seeff

DUAL MANDATE

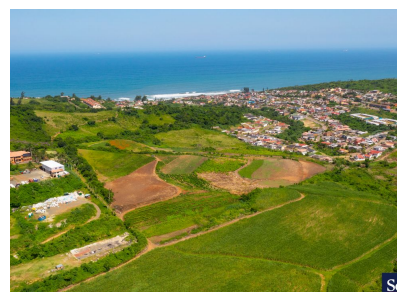
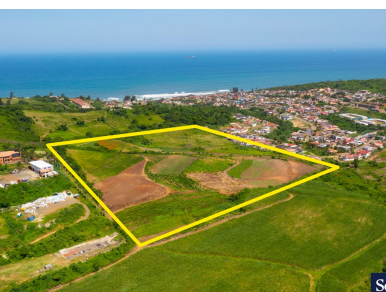


youtube.com/c/seeffzimbali/

www.seeff.com: RLS976133

Seeff

ZIMBALI



PRIME 12.1-HECTARE DEVELOPMENT LAND WITH SEA VIEWS & SUSTAINABLE FEATURES

This exceptional 12.1-hectare property, ideally situated between a thriving residential suburb and the prestigious Crawford School, presents a rare opportunity for development in a prime coastal location. Boasting breathtaking sea views, the land offers endless possibilities for residential, eco-friendly, or agricultural projects. Just 800 meters from Crawford School, the site ensures convenient access to top-tier education while maintaining a sense of seclusion and tranquility. Its strategic location enhances its appeal, making it perfect for investors, developers, or individuals seeking a unique lifestyle estate.



Dieven Govender

074 325 0167

dieven.govender@seeff.com

Scan here
to view
full listing



Land Size 121,000m²

Rates R185.00

Estate Levy -