

HOME
IS OUR
STORY

FOR SALE R1,790,000

50 VALLEY ROAD, UNIT 10 KING SHAKA ESTATE,
WESTBROOK

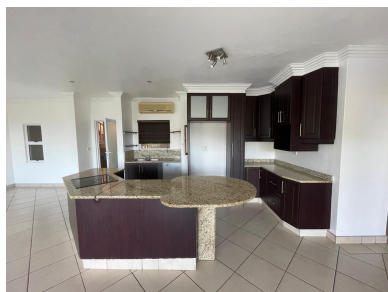
Seeff

DUAL MANDATE



youtube.com/c/seeffzimbali/

www.seeff.com: RLS983503



GORGEOUS TOWNHOUSE WITH SEA VIEWS AND A GARDEN



3



2



2

This modern and spacious townhouse with stunning finishes, situated in the beautiful King Shaka Eco Estate. This exquisite property offers the perfect blend of modern design with comfort, and elegance. Step inside this beautiful unit and be captivated by the spacious open-plan living areas, filled with natural light and designed for effortless entertaining with beautiful Sea Views from the expansive balcony. The kitchen boasts sleek finishes and ample storage, complementing the stunning built-in cupboards found in every bedroom. The unit is fully air-conditioned for those humid days.

Land Size 65,501m²
Floor Size 182m²

Rates
Estate Levy R2,450.00
Sectional Title Levy -

R1,850.00
R2,450.00

Pool Yes
Pets Allowed Yes



Nicole David

071 674 3282

nicole.david@seeff.com

Scan here
to view
full listing

