

HOME  
IS OUR  
STORY

**FOR SALE R895,000**

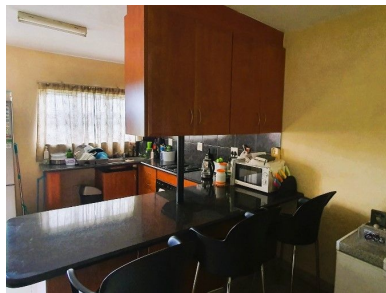
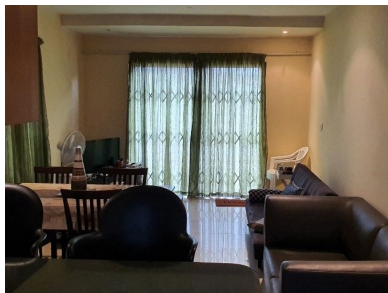
2 RAMIAH DRIVE, UNIT 5 METCALFE MANORS,  
TONGAAT CENTRAL

**Seeff**



[youtube.com/c/seeffzimbali/](https://www.youtube.com/c/seeffzimbali/)

[www.seeff.com](http://www.seeff.com): RLS955065



## PERFECT LOCK UP AND GO DUPLEX IN CENTRAL TONGAAT

 3    2    1

Nestled in the heart of Central Tongaat, Metcalf Manors presents an enticing opportunity for comfortable and convenient living in a bustling urban setting. This townhouse boasts a spacious layout, offering three bedrooms and two bathrooms, ideal for families or those seeking ample space. The property features a lock-up garage, providing secure parking for one vehicle and additional open parking space, ensuring convenience for residents and their guests. Fully fitted cupboards throughout the home offer ample storage solutions, enhancing organization and functionality.

**Land Size** 2,318m<sup>2</sup>  
**Floor Size** 123m<sup>2</sup>

**Rates** R668.00  
**Estate Levy** -  
**Sectional Title Levy** R1,724.00

**Pool** No  
**Pets Allowed** No



**Dieven Govender**

**074 325 0167**

[dieven.govender@seeff.com](mailto:dieven.govender@seeff.com)

Scan here  
to view  
full listing

