

**HOME
IS OUR
STORY**

FOR SALE R759,000

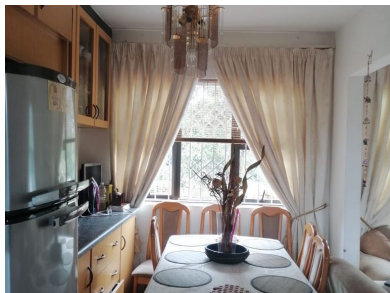
**47 PLANE STREET, UNIT 12 PLEIN GROVE, TONGAAT
CENTRAL**

Seeff



[youtube.com/c/seeffzimbali/](https://www.youtube.com/c/seeffzimbali/)

www.seeff.com: RLS984830



SOUGHT-AFTER SECURE COMPLEX IN THE HEART OF TONGAAT

 2  1  0

Welcome to this well-maintained apartment located in the heart of Tongaat Central. The unit features a spacious open-plan living area, a fully fitted kitchen, well-sized bedrooms with built-in cupboards, and a neat, functional bathroom. The complex is fully secure, offering peace of mind with 24-hour security, controlled access, and secure parking. Set within a quiet and well-kept development, this home provides a serene environment while still being just minutes away from major routes and shopping facilities.



Prakashan Naidoo

082 372 7942

prakashan.naidoo@seeff.com

Scan here
to view
full listing



Land Size 2,028m²
Floor Size 55m²

Rates R453.00
Estate Levy -
Sectional Title Levy R950.00

Pool No
Pets Allowed No

