

**HOME
IS OUR
STORY**

FOR SALE R4,495,000

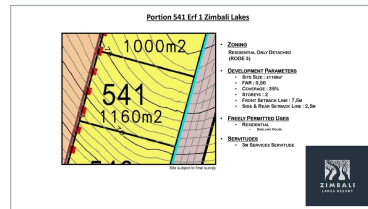
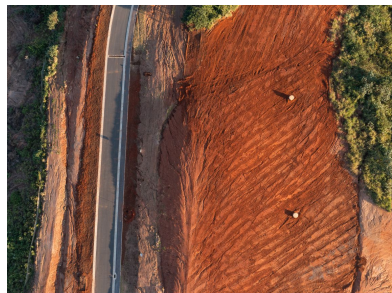
**PTN 541 ZIMBALI LAKES DRIVE, ZIMBALI LAKES
RESORT**

Seeff



youtu.be/njhL2MdKAR0

[www.seeff.com: RLS912877](http://www.seeff.com:RLS912877)



DESIGN AND BUILD YOUR ULTIMATE HOME AND ENJOY RESORT STYLE LIVING

This superb site falls conveniently within Phase 1 of the Zimbali Lakes Resort development with lake views sea views and 360 degree view of the estate, with all bulk services already in place. Conceptualize and build your ultimate dream home on this vacant plot, which enjoys distant sea views and is perfectly positioned within close proximity to the clubhouse and other recreational amenities in the estate.



Siya Mkhwanazi

063 858 6242

siya.mkhwanazi@seeff.com

Scan here
to view
full listing



Land Size 1,160m²

Rates R3,300.00

Estate Levy R3,500.00

