

**HOME
IS OUR
STORY**

FOR SALE R4,250,000

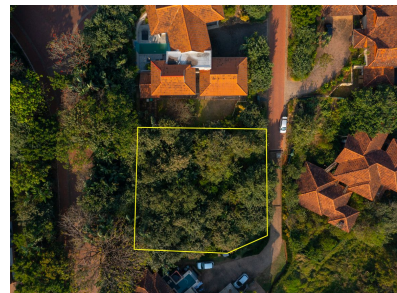
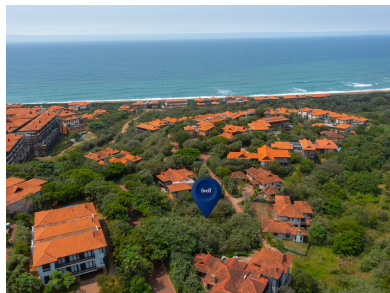
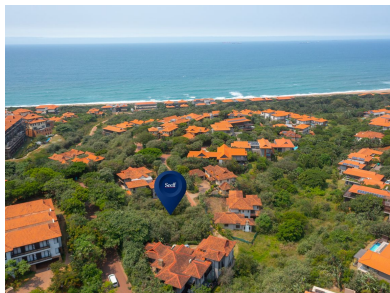
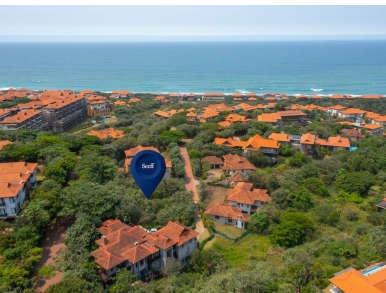
**4 LEADWOOD CLOSE-PTN 41 OF ERF 6, ZIMBALI
ESTATE**

Seeff



youtu.be/wg97EoGuGmY

www.seeff.com: RLS916007



ELEVATED SITE WITH SEA VIEWS AND GREENBELT VIEWS

Build your dream home on this well elevated 1002 sqm stand which boasts great views of the ocean and lush Zimbali greenbelt. This site is well positioned for peaceful living in a quiet cul-de-sac, yet lies conveniently within close proximity to the Capital Zimbali Hotel and the Zimbali South Gate entrance. A rare find within the established and developed part of the estate and priced to attract attention in the market.



Prakashan Naidoo

082 372 7942

prakashan.naidoo@seeff.com

Scan here
to view
full listing



Land Size 1,002m²

Rates R4,336.30

Estate Levy R4,950.33

