

**HOME
IS OUR
STORY**

FOR SALE R5,500,000

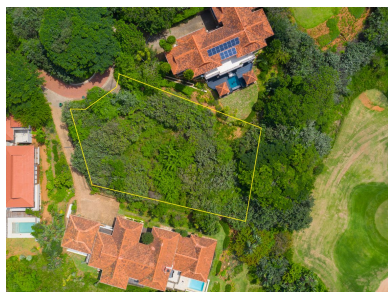
11 BRITTLEWOOD DRIVE, ERF 325, ZIMBALI ESTATE

Seeff



youtu.be/kU6CUe5Ydns

www.seeff.com: RLS969397



PRIME FAIRWAY FRONTING VACANT LAND WITH SUNNY NORTHERN ELEVATION

Amazing Fairway fronting elevation with endless vistas! Superb Vacant Land Buy in Zimbali!! A protected sunny site with a northern aspect and elevated position provides dramatic views over multiple fairways and a large lake and greenbelt. Established surroundings and easy access make this a rare and desirable development opportunity. The gentle south-to-north gradient of the site ensures maximum exposure to views and sunlight. Vacant Land is now a rare commodity in Zimbali – do not delay on this one.



Andreas Wassenaar

082 837 9094

andreasw@seeff.com

**Scan here
to view
full listing**



Land Size 1,069m²

Rates R6,336.03

Estate Levy R4,950.33

