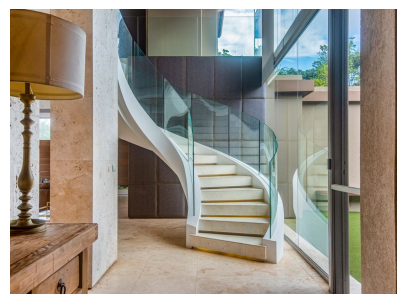
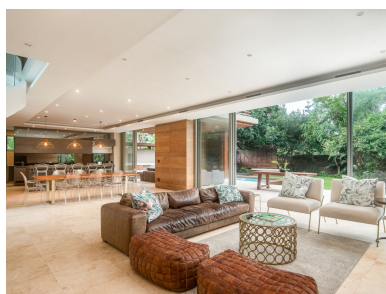
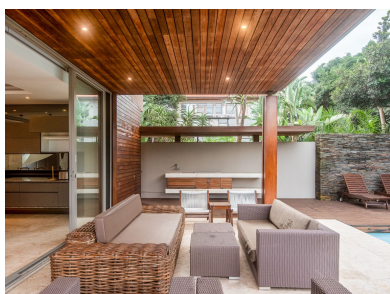



[youtu.be/d1\\_d9T1GLu0](https://youtu.be/d1_d9T1GLu0)
[www.seeff.com: RLS934000](http://www.seeff.com: RLS934000)


## ULTRA MODERN AND SOPHISTICATED LIVING SPACES



4



4



2

This ultra-modern and beautifully appointed home provides a sense of sophistication and elegance. The striking spiral staircase with curved glass balustrading is love at first sight and sets the scene for impressive viewing. The oversized living, dining and entertainment spaces on the ground floor boast floor-to-ceiling sliding doors and invite you to explore the outdoor living areas with a flat private garden and pool. A separate scullery is conveniently accessed from the showcase kitchen. The automated blinds slide seamlessly at a push of a button.


**Andreas Wassenaar**
**082 837 9094**
[andreasw@seeff.com](mailto:andreasw@seeff.com)

Scan here  
to view  
full listing



**Land Size** 16,877m<sup>2</sup>  
**Floor Size** 550m<sup>2</sup>

**Rates**  
**Estate Levy** R4,429.61  
**R4,950.33**  
**Sectional Title Levy** R2,927.12

**Pool** Yes  
**Pets Allowed** No

