

HOME  
IS OUR  
STORY

**FOR SALE R11,000,000**

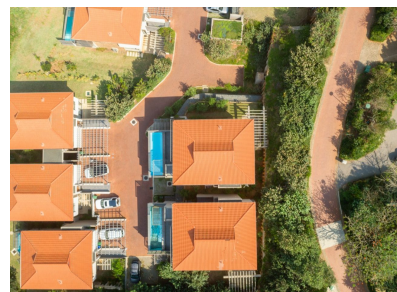
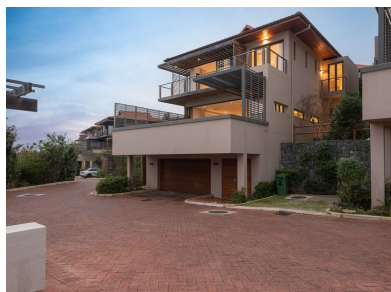
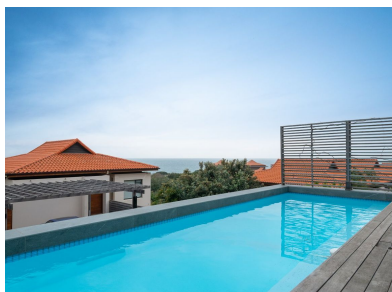
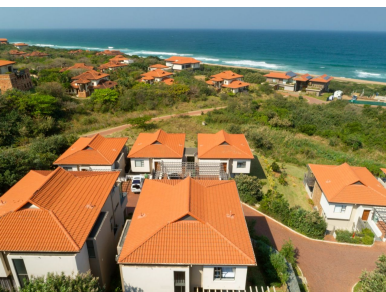
15-17 LEADWOOD LOOP, UNIT 2 OCEANS EDGE,  
ZIMBALI ESTATE

**Seeff**



[youtu.be/IFdvAlb5LZE](https://youtu.be/IFdvAlb5LZE)

[www.seeff.com](http://www.seeff.com): 4974735



## BEAUTIFULLY APPOINTMENT TOWNHOUSE, IMMACULATE INTERIORS PLUS SEA VIEWS

 4    3    2

This exquisite townhouse is located at the end of a private cul-de-sac offering open and peaceful surroundings with views over a beautiful pristine green belt. The lower ground entrance level provides the double lock-up garaging plus an additional utility room. The entrance gives way to a set of stairs leading to the ground floor with magnificent living, dining and open plan kitchen. The large floor to ceiling glass sliding doors allows the patio and pool deck to seamlessly become part of the living space.

**Land Size** 6,198m<sup>2</sup>  
**Floor Size** 356m<sup>2</sup>

**Rates** R3,812.83  
**Estate Levy** R4,950.33  
**Sectional Title Levy** R2,001.00

**Pool** Yes  
**Pets Allowed** No



**Andreas Wassenaar**

**082 837 9094**

[andreasw@seeff.com](mailto:andreasw@seeff.com)

Scan here  
to view  
full listing

