

HOME
IS OUR
STORY

FOR SALE R8,950,000

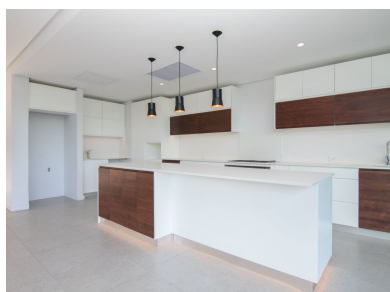
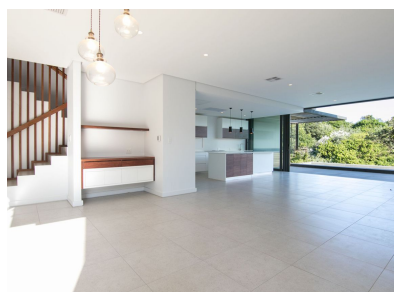
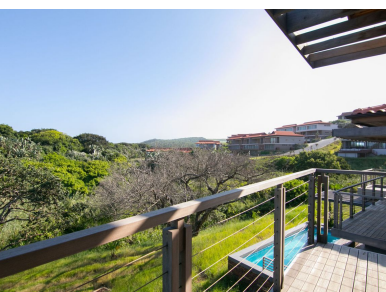
15-17 LEADWOOD LOOP, UNIT 28 OCEANS EDGE,
ZIMBALI ESTATE

Seeff



youtu.be/E611C29j_9M

www.seeff.com: 3419310



OPULENT OCEANS EDGE TOWNHOUSE WITHIN TRANQUIL SETTING

 3  3.5  0

****VAT included in Price - No Transfer Duty**** In the exclusive Oceans Edge sectional scheme, Zimbali, lie 31 easy-living, Modern Townhouses. This unit boasts forest vistas from the upper-level bedroom accommodation, which is accessed directly from the driveway level – easy access from the double carport. Clean and contemporary, whilst simultaneously enjoying the sound of the nearby ocean. The lower level comprises the entertainment and living areas, a beautiful open plan design, with quality finishes, easy flow and an abundance of natural light.

Land Size 6,198m²
Floor Size 279m²

Rates R2,610.00
Estate Levy R4,950.33
Sectional Title Levy R2,578.75

Pool Yes
Pets Allowed No



Mel Naidoo

074 788 5665

mellini.naidoo@seeff.com

Scan here
to view
full listing

