

HOME IS OUR STORY

FOR SALE R7,950,000

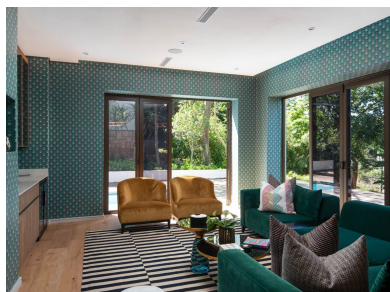
9 BIRDIE CLOSE, ZIMBALI ESTATE

Seeff



[youtu.be/9obwAm3h\\_j8](https://youtu.be/9obwAm3h_j8)

[www.seeff.com: RLS947241](http://www.seeff.com: RLS947241)



## BEAUTIFUL ARCHITRECURALLY DESIGNED FAMILY HOME IN A SERENE SETTING

 4  4  2

Step into the epitome of modern design with this contemporary gem of a family home that is nestled amongst trees in a quiet cul-de-sac location. The home seamlessly blends aesthetics and functionality, as the open plan layout creates a sense of spaciousness, seamlessly connecting the living, dining, and kitchen areas. The kitchen is a culinary haven, with a chic design that invites both casual conversations and gourmet cooking. A sunroom extends the living space, offering a tranquil retreat bathed in natural light. It opens out to a large deck with a swimming pool and fire pit, overlooking the garden.



Prakashan Naidoo

082 372 7942

[prakashan.naidoo@seeff.com](mailto:prakashan.naidoo@seeff.com)

Scan here  
to view  
full listing



Land Size 792m<sup>2</sup>

Floor Size 392m<sup>2</sup>

Staff Accommodation Yes

Study No

Pets Allowed No

Rates R3,438.38

Estate Levy R4,950.33

