

HOME
IS OUR
STORY

FOR SALE R9,090,000

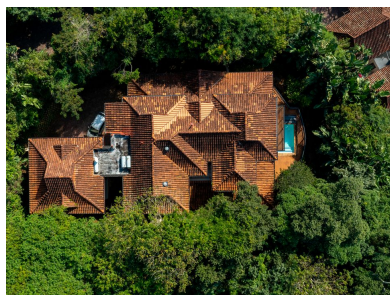
24 LAKEWOOD DRIVE, ZIMBALI ESTATE

Seeff



youtu.be/kN_UQH0DX7A

www.seeff.com: RLS935978



ELEVATED TRANQUIL FOREST RETREAT OVERLOOKING PROTECTED "HOLY HILL"

 5  5  2.5

****PRICE INCLUDES VAT-NO TRANSFER DUTY PAYABLE**** This beautiful home is set in serene forest surrounds and enjoys lush views over a protected greenbelt. The interior living spaces are spacious and further complemented by a splendid, covered patio and pool deck, where you can relax or entertain in privacy, whilst enjoying the sights and sounds of the natural surroundings. The large kitchen is well-appointed, with a separate scullery and laundry. Four en-suite bedrooms have direct balcony access, affording views over the forest and of the sea.

Land Size 1,175m²
Floor Size 500m²

Staff Accommodation No
Study No
Pets Allowed No

Rates R4,653.89
Estate Levy R4,950.33



Prakashan Naidoo

082 372 7942

prakashan.naidoo@seeff.com

Scan here
to view
full listing

