

HOME  
IS OUR  
STORY

**FOR SALE R12,500,000**

5 TEAK CLOSE, ZIMBALI ESTATE

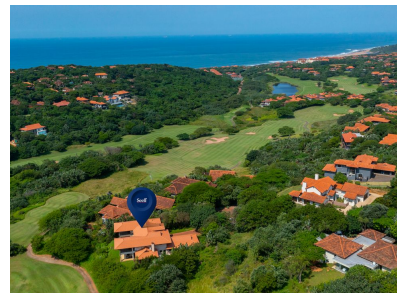
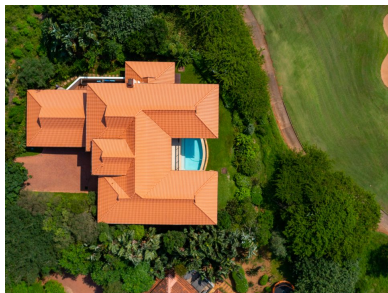
Seeff

DUAL MANDATE



[youtu.be/\\_c0EuhBwUag](https://youtu.be/_c0EuhBwUag)

[www.seeff.com: RLS930891](http://www.seeff.com: RLS930891)



## OUTSTANDING GOLF COURSE POSITION OVERLOOKING STUNNING GREEN, FAIRWAY & LAKE

 4    4    3

Outstanding Golf Course setting with magnificent green, fairway and lake views on one of the most beautiful golf course facing opportunities in South Africa. With a sunny north-facing elevation the home enjoys excellent sunlight year-round and the deep patios and overhangs allow for outdoor living in all weather conditions. Lavish ground-floor entertainment, living and dining areas seamlessly extend to the large undercover patios and the fairway and green beyond.

**Land Size** 1,136m<sup>2</sup>  
**Floor Size** 500m<sup>2</sup>

**Staff Accommodation** Yes  
**Study** Yes  
**Pets Allowed** No

**Rates** R6,672.45  
**Estate Levy** R4,950.33



Andreas Wassenaar

082 837 9094

[andreasw@seeff.com](mailto:andreasw@seeff.com)

Scan here  
to view  
full listing

