

HOME
IS OUR
STORY

FOR SALE R20,000,000

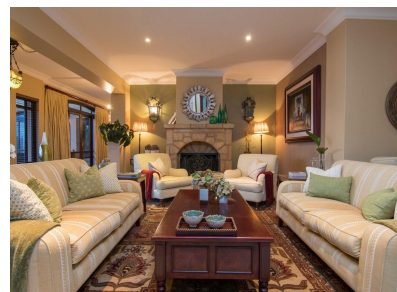
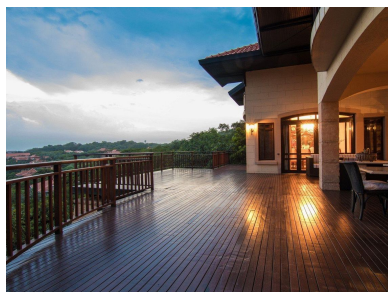
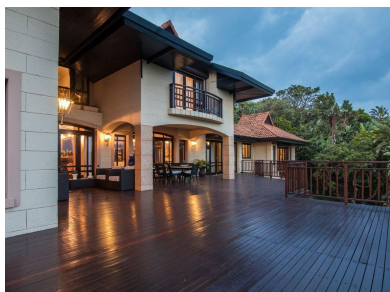
3 PITCHINGWEDGE, ZIMBALI ESTATE

Seeff



youtu.be/cF608GcLNLU

www.seeff.com: 3106306



MAGNIFICENT MASTER-BUILT MANOR HOUSE

 4  4  3

This extraordinary master built residence commands majestic views over the Zimbali golf course, 100-acre conservation area and the blue Indian Ocean beyond. The surrounding green belt offers absolute privacy. The entrance level of the home reveals the main living, dining, kitchen and entertainment spaces. The oversized wooden deck provides some of the finest golf course views available. The pool is intelligently positioned within a protected sunny courtyard on the northern elevation.



Andreas Wassenaar

082 837 9094

andreasw@seeff.com

Scan here
to view
full listing



Land Size 2,800m²
Floor Size 747m²

Staff Accommodation No
Study No
Pets Allowed No

Rates R5,719.24
Estate Levy R4,950.33

