

HOME
IS OUR
STORY

FOR SALE R11,500,000

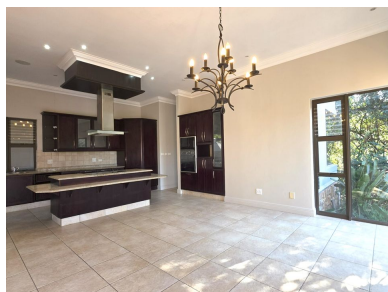
9 BRITTLEWOOD DRIVE, ZIMBALI ESTATE

Seeff



youtube.com/c/seeffzimbali/

www.seeff.com: RLS987449



GOLF COURSE FRONTAGE WITH SEAMLESS INDOOR-OUTDOOR LIVING

 4  4  2

Set in the heart of the prestigious Zimbali Estate, 9 Brittlewood offers a rare combination of sophistication, comfort, and effortless functionality. Perfectly positioned to face the golf course and dam, this freshly painted residence welcomes you with a crisp, clean sense of arrival. Inside, soaring ceilings create expansive living areas bathed in natural light, while the practical layout ensures ease of living. Energy-efficient solar panels and an inverter system ensure year-round reliability. A double garage with dedicated golf cart space and ample parking enhances daily convenience.



Mel Naidoo

074 788 5665

mellini.naidoo@seeff.com

**Scan here
to view
full listing**



Land Size 1,192m²
Floor Size 500m²

Staff Accommodation No
Study Yes
Pets Allowed No

Rates R3,981.00
Estate Levy R4,950.00

