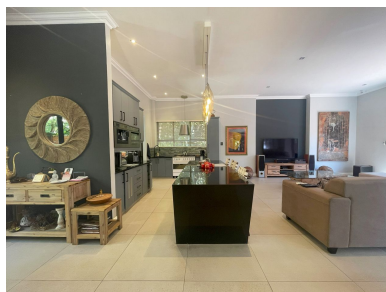
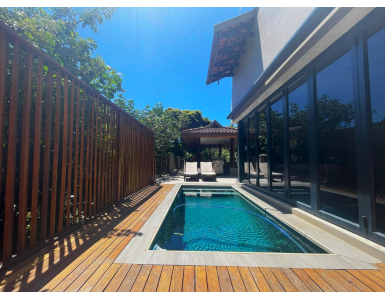


youtube.com/c/seeffzimbali/www.seeff.com: RLS975712

A LUXURIOUS MODERN MASTERPIECE WITH HIGH END FINISHES

3 Bedrooms 3 Bathrooms 3 Carports

This stunning home is nestled in a tranquil cul-de-sac within the prestigious Zimbali Estate. Upon entering, you are greeted by a grand staircase that leads into the expansive open-plan living. The layout and design of this area offers space and a flood of natural light that adds to the warmth and ambiance of the room. It integrates the dining room, kitchen, and TV lounge, creating an inviting area perfect for both everyday living and entertaining. For a more relaxed atmosphere, an informal lounge with a built-in braai opens up fully onto the pool and patio, ideal for outdoor gatherings.

Land Size 940m²
Floor Size 300m²

Staff Accommodation Yes
Study No
Pets Allowed No

Rates R2,859.62
Estate Levy R4,950.33



Andreas Wassenaar

082 837 9094

andreasw@seeff.com

**Scan here
to view
full listing**

