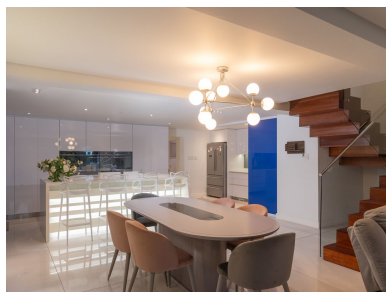


youtu.be/jYgMRJkdKtlwww.seeff.com: RLS973338

ULTRA MODERN DESIGNER HOME WITH BEAUTIFUL SEA VIEWS

3 2.5 2

This exceptional contemporary home offers modern living with breathtaking sea views. The ground floor features an oversized double garage with built-in cupboards, inverter, battery, and solar system to ensure a reliable power supply. A gentle stairwell leads to the first-floor entrance, where you'll find a spacious lounge opening to an undercover patio with sea views. The open-plan dining area flows into a sleek kitchen with a scullery and a guest WC.

**Andreas Wassenaar****082 837 9094**

andreasw@seeff.com

Scan here
to view
full listing



Land Size 416m²
Floor Size 300m²

Staff Accommodation No
Study No
Pets Allowed No

Rates R2,467.13
Estate Levy R4,950.33

