

HOME
IS OUR
STORY

FOR SALE R6,250,000

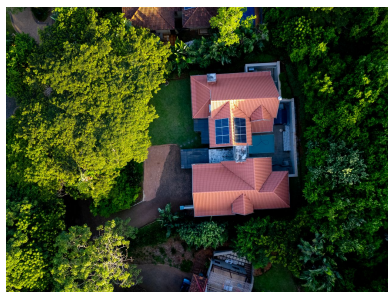
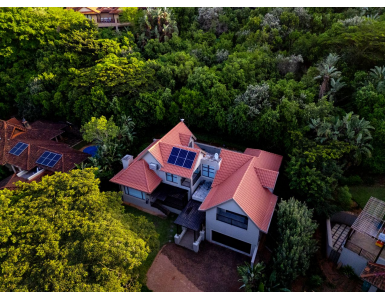
20 EAGLE CRESCENT, ZIMBALI ESTATE

Seeff



youtu.be/jFDoeKY_f04

www.seeff.com: RLS965589



IMMACULATE FREEHOLD HOME WITH SUNNY GARDEN AND NORTH FACING ELEVATION

 3  3  2

This immaculate freehold home with sunny north-facing elevation and lush garden surrounds offers the Best Buy opportunity within Zimbali Estate. The inviting sense of arrival leads to the ground floor space with all the living, dining, and entertainment spaces. The courtyard pool is a welcome private retreat protected from all prevailing weather. The main suite on the first floor enjoys a private patio light interior spaces and a generously proportioned en-suite bathroom.

Land Size 922m²
Floor Size 270m²

Staff Accommodation No
Study No
Pets Allowed No

Rates R3,139.98
Estate Levy R4,950.33



Andreas Wassenaar

082 837 9094

andreasw@seeff.com

Scan here
to view
full listing

