

HOME
IS OUR
STORY

FOR SALE R6,200,000

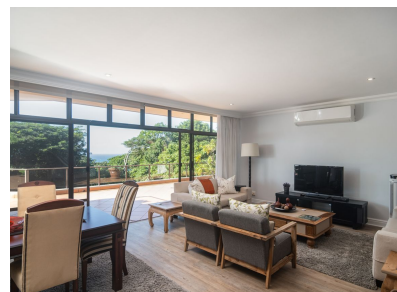
16 FORESTWOOD DRIVE, 3 SHAYAMOYA, ZIMBALI ESTATE

Seeff



youtu.be/FJ8P5tTPUs4

www.seeff.com: RLS972300



SPACIOUS FIRST FLOOR APARTMENT WITH SEA & FOREST VIEWS

 3  3  3

Ultra-spacious first-floor apartment with an impressive sunny northeast-facing position and beautiful forest and sea views. The grand sense of scale is immediately evident on arrival. Set in a lush tropical garden-like environment, these impressive apartments enjoy a premium location with exceptional birdlife. The apartment is built within an exclusive block of six with large basement lock-up garaging. It has 96 sqm of garaging space. Patios do not come much bigger than that provided by this property, and the outlook ensures a tranquil and peaceful living experience.

Land Size 23,032m²
Floor Size 586m²

Rates R3,532.47
Estate Levy R4,950.33
Sectional Title Levy R7,902.00

Pool Yes
Pets Allowed No



Andreas Wassenaar

082 837 9094

andreasw@seeff.com

Scan here
to view
full listing

